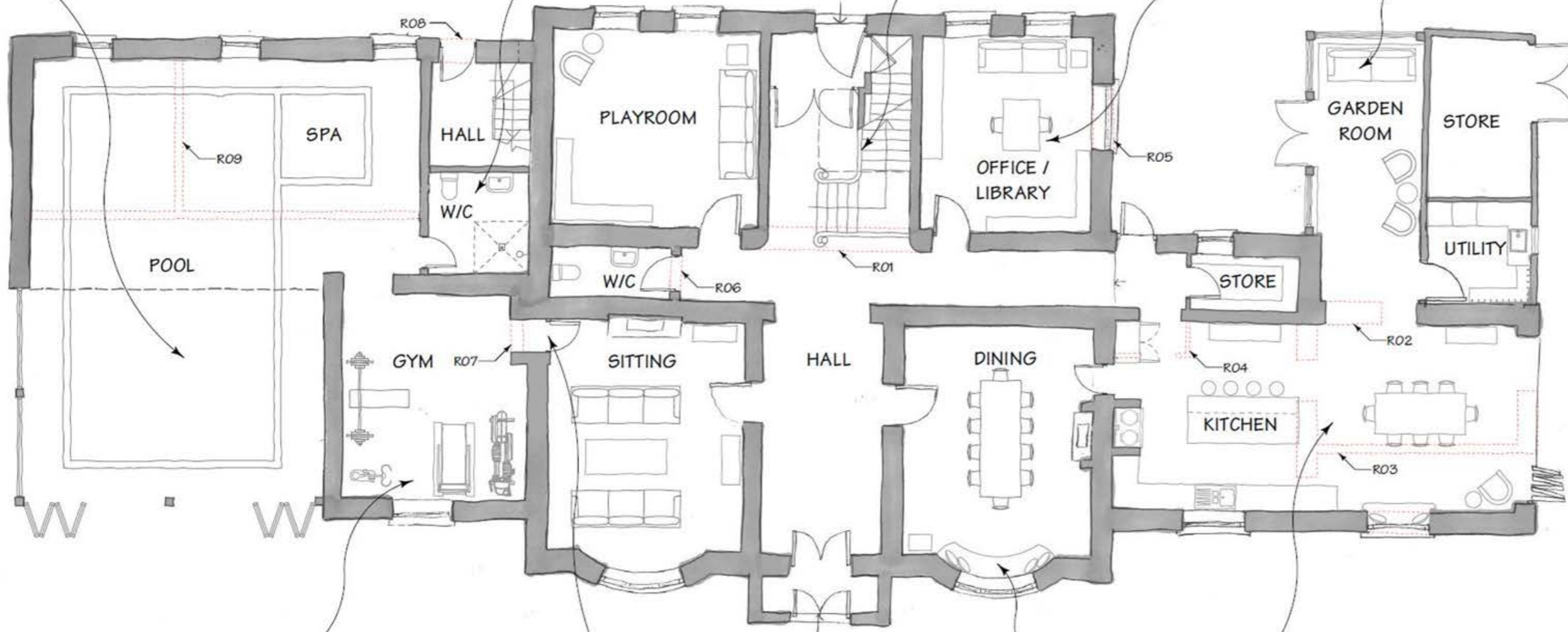
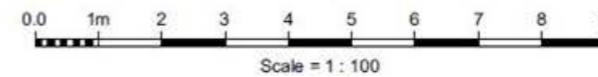


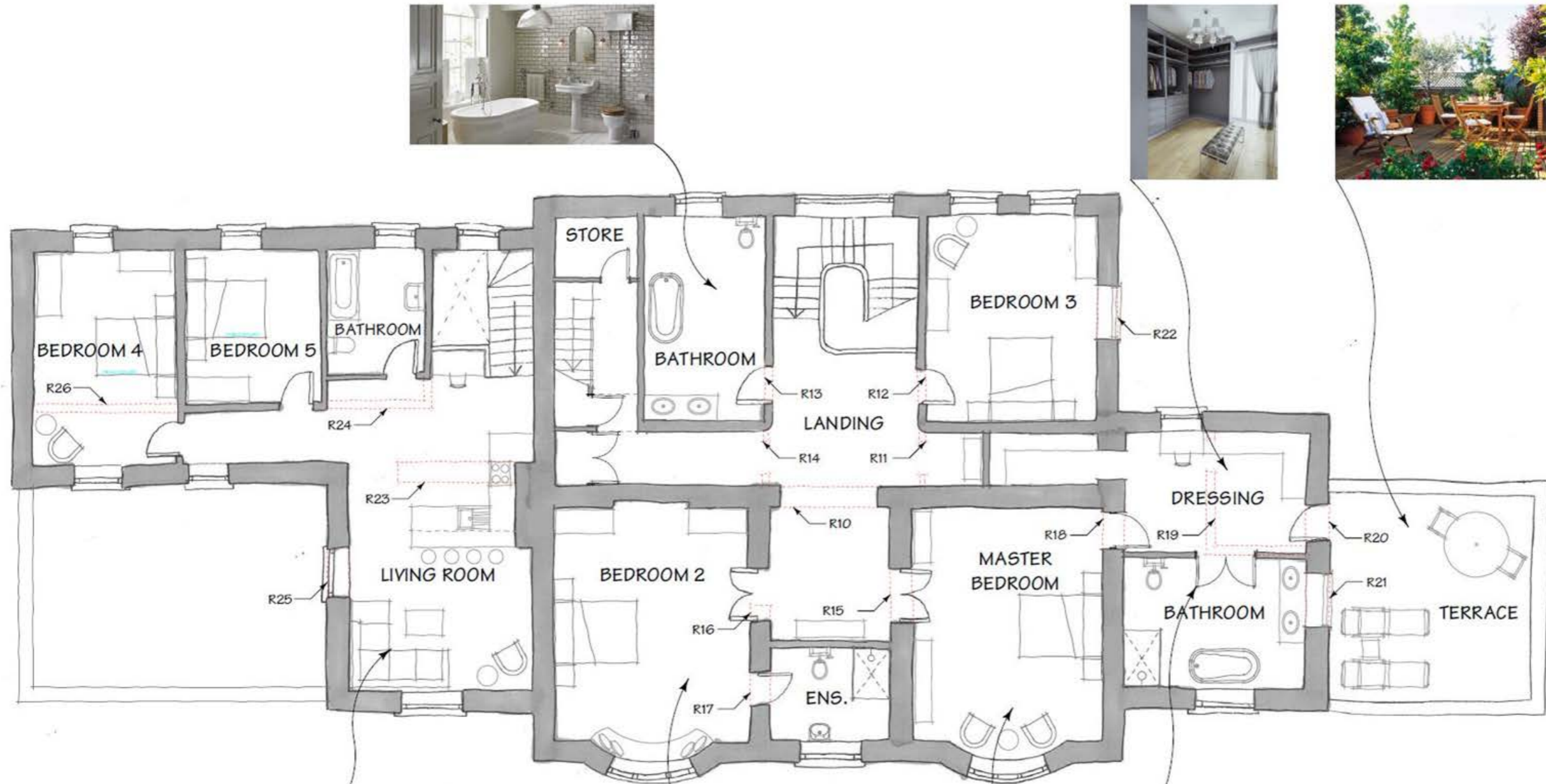
Mountfield House proposed



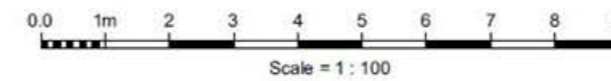
GROUND FLOOR PLAN



Mountfield House proposed



FIRST FLOOR PLAN



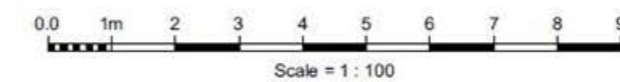
Mountfield House proposed

Mountfield House is restored with the addition of a terrace which further visually connects the house with its surrounding grounds. Period features of significance such as windows and cornicing are restored in keeping with the original, maintaining the overall impact of the property. Minor alterations to the existing floor plan to create an open and liveable space without compromising the integrity of the structure as stands.



GEA Calculation

	North Wing	Main House	South Wing	Total
Ground Floor	146.95 m ²	205.30 m ²	104.68 m ²	456.93 m ²
First Floor	107.50 m ²	201.00 m ²	35.50 m ²	344.00 m ²
Second Floor	-	199.80 m ²	-	199.80 m ²
		Building Total:		1000.73 m²



SECOND FLOOR PLAN